

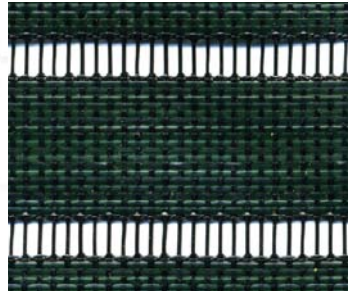
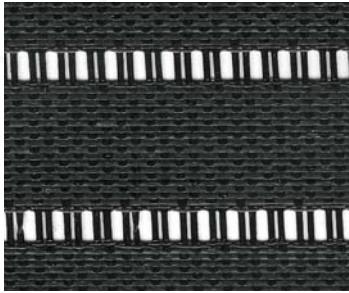
# TENNIS WINDSCREENS

Windscreens are an attractive and functional way to reduce bothersome noise, wind and visual distractions. With these adverse elements removed, concentration and level of play improves.

Douglas® offers you more choices, better service, superior fabrication and attention to detail that is unsurpassed in the industry.

## Polypropylene - Durability

Available in OMP (Open Mesh) or CMP (Closed Mesh) material. 100% Polypropylene material is our most popular windscreen fabric. This low-maintenance material offers classic good looks, and highly durable performance. Douglas® polypropylene material is heat-set so your screens will never shrink or change shape. Weather and UV protection is extruded into every fiber of Douglas® Polypropylene windscreen for maximum performance and long life.



### Poly-Pro™ (OMP) & (CMP)

### Poly-Pro™ Basic

Fabric: 100% polypropylene  
OMP: Open - 28 x 14 leno weave  
CMP: Closed - 30 x 16 leno weave

Fabric: 100% polypropylene  
OMP: Open - 28 x 14 leno weave  
CMP: Closed - 30 x 16 leno weave

Windbreak: Open - 80%  
Closed - 95%

Windbreak: Open - 75%  
Closed - 86%

Weight per square yard:  
Open - 6 oz.  
Closed - 7 oz.

Weight per square yard:  
Open - 5 oz.  
Closed - 6 oz.

Tensile strength: Open - 320 x 180  
Closed - 420 x 225

Tensile strength: Open - 250 x 170  
Closed - 350 x 215

Colors: Dark Green or Black

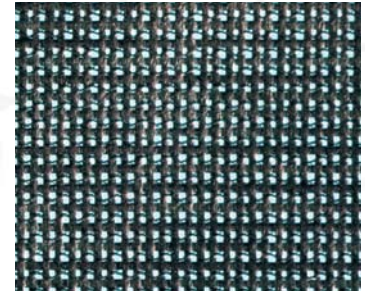
Colors: Dark Green or Black

Warranty: 4 Year limited

Warranty: 2 Year limited

## Vinyl Coated Polyester - Versatility -

A very attractive and durable windscreen, VCP comes in a variety of colors and custom lettering and logos can be applied. VCP is resistant to water, salt, mildew and UV rays.



### DouraScreen

### Vinyl Coated Polyester

Fabric: 22% high tenacity polyester  
78% flexible foamed PVC  
Open - 9 x 8 weave  
Closed - 12 x 14 weave

Fabric: 50% vinyl, 50% polyester,  
Open (VCP) - 9 x 12 weave

Windbreak: Open - 80%  
Closed - 95%

Windbreak: Open - 80%

Weight per square yard:  
Open - 10 oz.  
Closed - 12 oz.

Weight per square yard:  
Open - 7 oz.

Tensile Strength: Open - 170 x 155  
Closed - 230 x 240

Tensile strength: Open - 230 x 200

Colors: Dark Green or Black

Colors: Dark Green or Black  
Other Colors: Yellow, White, Royal Blue, Red, Purple, Orange, Navy, Burgundy, Gray, Brown & Bright Green

Warranty: 4 Year limited

Warranty: 3 Year limited



## Windscreen Features

For strength and durability, Douglas windscreens feature these unmatched industry standards:

- Douglas extra-strong hems are constructed with 28 oz. vinyl inserts double sewn to 1-1/2" wide (Figure 1)
- All hems include #2 brass grommets spaced on 18" intervals
- Douglas Windscreens are available in standard 6' and 9' heights and in custom heights by quotation
- Any screen width is available; however 60' is the maximum recommended width per panel
- All 9' screens include Center Reinforcement Tape (CRT) with grommets for anti-billowing installation (Figure 3)
- Optionally, 9' screens may substitute a Center Tab hem construction (Figure 4) for anti-billowing installation
- 4-ply hems; (R) constructed with 18 oz. vinyl overlay and #2 brass grommets spaced every 12" (figure 2)
- All Windscreen options must be specified when ordering

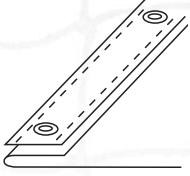


Figure 1  
Extra-Strong Hems

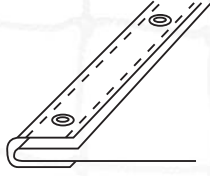


Figure 2  
4-Ply Hem

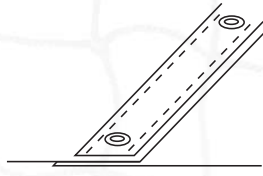


Figure 3  
Center Reinforcement Tape

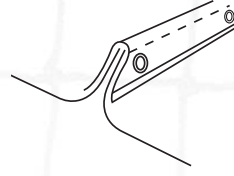


Figure 4  
Center Tab Hem



**AVR**  
(Item # 21002)  
Reinforced air vents, installed at 10' intervals, are optional on all windscreens and are recommended for closed mesh screens and 9' high screens.



**AV** (Item # 21001)  
Die-cut and heat sealed air vents are available for vinyl-coated polyester screens only. Recommended for all VCP screens



## Windscreen Logos and Advertisements

Turn your chain link fence into an advertisement and earn thousands of dollars for your organization. Custom designed to fit your needs. Call for additional information and pricing.

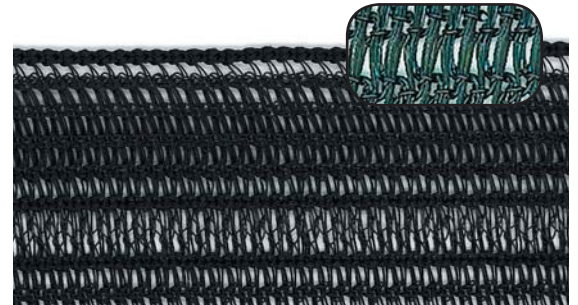


## Weathascreen

- 6'H x 120'L, Green (WS-72) (Item # 30006)
- 6'H x 120'L, Black (WS-72) (Item # 30006B)
- 9'H x 120'L, Green (WS-108) (Item # 30009)
- 9'H x 120'L, Black (WS-108) (Item # 30009B)

What makes Weathascreen so unique is its locked-spring knitted construction - IT'S NOT WOVEN! Weathascreen fabric is formulated of double-thick Monolon that's fray resistant. It distributes stress loads evenly, and is lightweight for easy storage and transportation.

- High tensile strength (15 times the tear resistance of woven cloth, won't unravel)
- Superior ultra-violet stability
- Resistant to abrasion, mildew, and chemicals
- Easy installation - No grommets necessary
- Reduces visual intrusion & helps eliminate glare
- Available in Dark Green or Black
- Purchase by the roll, 120' length
- Available in 6' or 9' heights



## Installation Accessories

TR-50 (Item # 31650) 7" Tie wrap 50 lb. break strength with metal insert

TR-50XL (Item # 31651) 14-1/2" Tie wrap 50 lb. break strength with plastic insert

TR-50P (Item # 31656) 7" Tie wrap 50 lb. break strength with plastic insert

TR-120 (Item # 31654) 8.5" Tie wrap 120 lb. break strength with metal insert

TR-120XL (Item # 31655) Extra long 14" Tie wrap 120 lb. break strength with plastic insert

TR120P (Item # 31657) Tie wrap 8", 120 lb. break strength with plastic insert

SH-3 (Item # 31663) 3" galvanized "S" hooks

BNC (Item # 31600) Braided lacing cord 600' reels

BLR (Item # 31601M) Braided lacing rope black poly 3/16" 1000' reels 550 lb. break strength

C-3P (Item # 32675) 3" plastic C-snap

